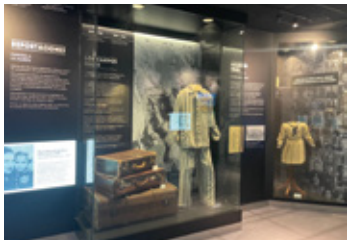
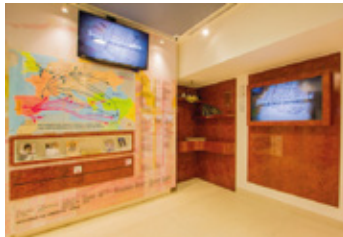


ABOUT THE MUSEUM

The Jewish Museum of Chile opened its doors in November 2014. The two permanent exhibitions were developed in partnership with the Hebrew University of Jerusalem. The Museum is located within the premises of the *Círculo Israelita de Santiago*, the largest Jewish community center in Chile. Its extension activities include educational programs and resources.

MISSION | The Jewish Museum educates the general public- especially students- about the Jewish history in the global context and its ongoing impact on Western culture.

VISION | The Museum seeks to promote the value and respect for multiculturalism in a didactic way with the objective to empower our society to form their own opinions. This way, hate propaganda and lies will never again lead to the persecution of the Jewish people or any other human group.



THE MUSEUM IN NUMBERS

Since its opening and until June 2022, the Museum has reached

More than
67.000 people

.....>

40%
middle school students

Cost per course
(40 students)
including transportation
and guides

.....>

US\$ 6 per student
US\$ 240 per course

EDUCATIONAL PROGRAMS

Jewish History Exhibition | Through the stories of King David, Rabbi Akiva, Maimonides and Theodor Herzl, it illustrates what it means to be a diverse people, which is bound to one land and one religion. It also invites to reflect on the struggle of the Jewish people to safeguard its identity and to share a 3,000-year-old dream.

Holocaust Exhibition | Displaying historical artifacts, survivor testimonies, timelines and audiovisual material, the exhibition provides a powerful account of the historical and moral dimensions of this dark period. It examines how prejudice paved the way for murder. In addition, it emphasizes the empathy and rescue actions of the Righteous Among the Nations and thus contributes to the formation of agents of change. The exhibition seeks to universalize the lessons of the Holocaust in order to prevent any form of hate today.

Citizenship Education | The Museum offers a variety of lectures and educational resources -including teacher training and guidance- to complement the national Citizenship Education curriculum, both in the classroom and online.

The visits and all activities of the Museum are free of charge. Its main target audience are students and teachers. Most of our projects are supported by the Chilean Government's Cultural Donations Law.

WHY A JEWISH MUSEUM IN CHILE?

37% Antisemitic trends index 2014 according to the Anti-Defamation League (ADL)

65% Believe that Jews have a lot of power in the business world of respondents

Strong presence of the BDS (Boycott, Divestment, Sanction) movement against Israel on Chilean university campuses.

Limited local educational resources about Jewish culture and the Holocaust.

FUNDING

The Museum is funded by: private donations, the MIJ Foundation in Chile and the Friends of the Chilean Jewish Museum and Holocaust Memorial, a 501 c (3) organization based in the U.S.

ANNUAL OPERATING BUDGET

Average 2014 until June 2022: US\$130,00

2014-2015 financed by MIJ Foundation (100%)

2016-2022 financed by MIJ Foundation (80%)

DONATIONS RECEIVED FROM PRIVATE AND COMPETITIVE FUNDING*

2016 - 2022 US\$ 242,000

*Ministry of Foreign Affairs of the Federal Republic of Germany, Keren Hayesod Chile, International Holocaust Remembrance Alliance.

PROJECTS TO DEVELOP

Book: "The Jews of Chile"

It highlights the role of the Jews in the shaping of the national identity and the development of the country in general. The text is ready to be printed. Editorial Catalonia. Donations to be raised: US\$ 20,000.

Traveling exhibitions

Logistics of "It was no Game" (Soccer in the Holocaust) and "How was it Humanly Possible?" exhibitions (US\$ 2,000). Production and logistics of "The People of Israel and the Holy Land" (US\$ 5,000).

School visits

Given the growing need for teaching about the dangers of hate speech and antisemitism, the permanent Shoah exhibition has been redesigned. Due to the high transportation costs, some schools are unable to be part of this important educational experience. Donations to be raised for 40 buses/year: US\$ 7,000.



Images of the new permanent Holocaust/Shoah exhibition, which opened in April 2022 thanks to private donations.

OUTREACH

From November 2014 to October 2022

	Institutions	Students	Teachers	General public	Extension	Total Outreach
2014	20	797	39	262		1.098
2015	59	3.114	254	931		4.299
2016	87	4.233	162	1.252		5.647
2017	71	3.231	218	1.817		5.266
2018	107	6.629	522	1.613	1.701	10.465
2019	134	7.096	514	1.552	5.756	14.888
2020	10	636	65	134	12.674	13.509
2021	36	2.809	115	111	4.710	7.745
2022	61	2.195	151	807	1.807	4.960
TOTAL	585	30.740	2.040	8.449	26.648	67.877

ALLIANCES AND PARTNERSHIPS

Chilean Jewish Archive, Chilean Police, Center of Jewish Studies of Universidad de Chile, International Council of Museums (ICOM), Anti-Defamation League (ADL), Memoria Viva, Chilean Ministry of Education, LAES Network, Unesco, United States Holocaust Memorial Museum, USC Shoah Foundation, among other strategic partners.

BOARD OF DIRECTORS MIJ

President | Dalia Pollak
Secretary | Lydia Bendersky
Treasurer | Yael Rosenberg
Director | Yona Ben David
Director | Daniel Chernilo
Director | Robert Funk
Director | Miguel Papic
Director | Henry Pollak
Director | Andrés Pollak
Director | Nicole Pollak

BOARD OF DIRECTORS OF THE FRIENDS OF THE CHILEAN JEWISH MUSEUM AND HOLOCAUST MEMORIAL

President | Irene Klinger
Director | Jacky Teplizky
Director | Marjorie Agosin
Officer | Jeanette Kaplun
Officer | Nienke Grossman

EXECUTIVE TEAM

Strategic Partnerships | Sofía Cohen
Extension and Development | Michelle Reich
Education | Beate Wenker
Communication Strategies | Antonia Sepúlveda

**FOR MORE INFORMATION
VISIT WWW.MUSEOJUDIO.CL**